

**State of Wyoming Corner Record**

(In compliance with the CORNER PERPETUATION AND FILING ACT, Wyoming Statutes, 1977, Section 36-11-101, et. seq., and the Rules and Regulations of the Board of Registration for Professional Engineers and Professional Land Surveyors)

Reverse side of this form may be used if more space is needed.

Record of original survey and citation of source of historical information (if corner is lost or obliterated). Description of corner monumentation evidence found and/or monument and accessories established to perpetuate the location of this corner. Sketch of relative location of monument, accessories, and reference points with course and distance to adjacent corner(s) (if determined in this survey). Method and rationale for reestablishment of lost or obliterated corner.

**G.L.O. Notes:** U.S. Deputy Surveyor, Alfred M. Rogers, June 20, 1871; 80.00 Chains... Set a red sand stone 18 x 12 x 4 for corner to Sections 17 18, 19 & 20

**Subsequent Records:** Laramie County Engineers office records indicates C.R. #86 with a 80' RofW being surveyed in County Roads Book No. 23, Page 2 along with road index cards indicating stones set 2-23-1926. Survey notes indicate "NW Cor 20-15-63 Set C.R. 56.4 SE & SW"

**Found:** Spike and washer with no identification at the intersection of the Centerline of Laramie County Road No. 143 and East-West section line fences.

**Set:** At the found spike and washer, I set a No. 5 x 24" rebar with a marked 2" Aluminum Cap approximately 0.05' below the asphaltic Laramie County Road No. 143. From present day recollection (April 3, 1997) I do not believe I searched for the county road stones mention above in the road index cards. A search should be made in the area for the county road stones.

See back of this sheet for ties to adjacent monuments.

Aluminum Cap Markings

T.15N. R.63W.

S.18 | S.17

S.19 | S.20

1994

PLS 2927

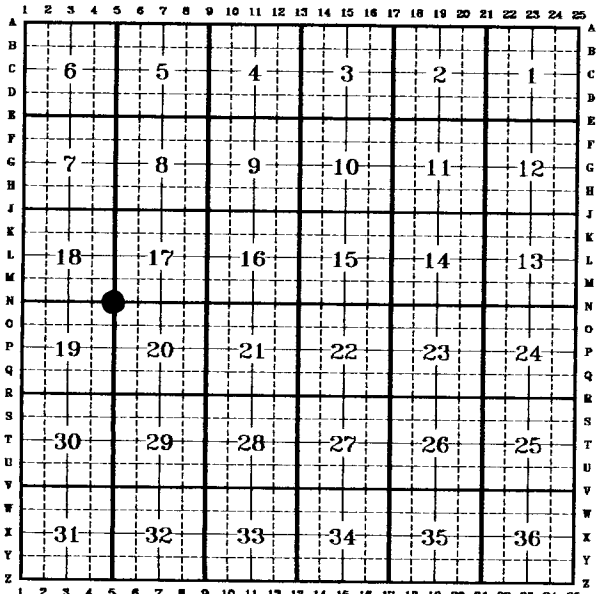
97 APR 7 PM 4 41

LARAMIE COUNTY CLERK  
CHEYENNE, WY.

200715

Date of Field Work: 17, April, 1994 Office Reference: EXXON Looseleaf Pg.73A

**CROSS INDEX DIAGRAM**



Firm/Agency, Address

Paul A. Reid, A.V.I.p.c.

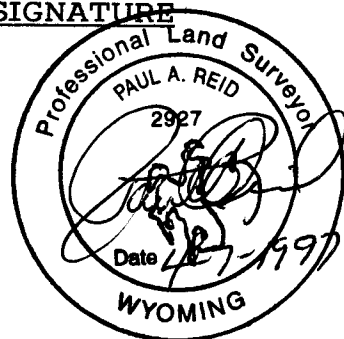
2035 Westland Road

Cheyenne, WY 82001

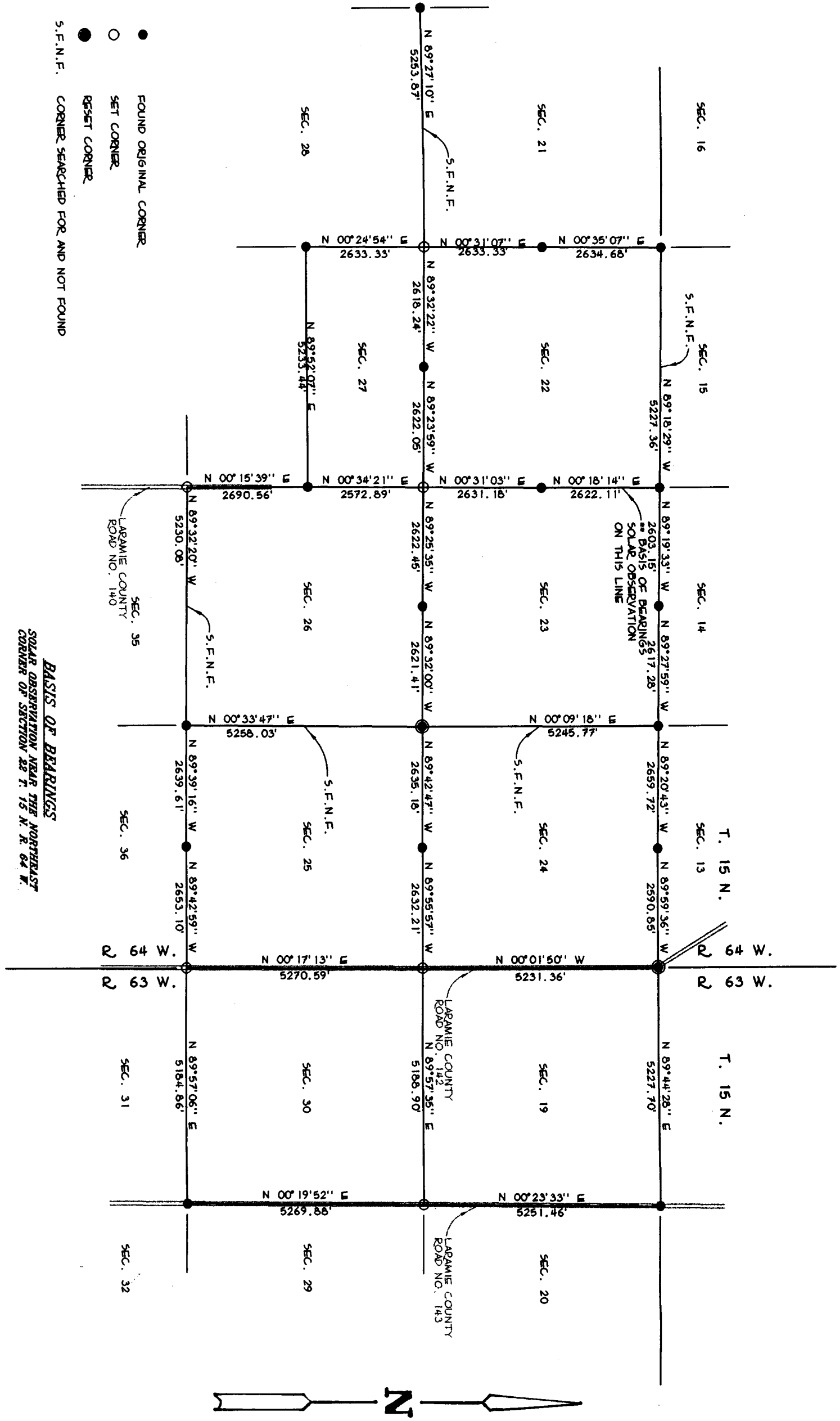
Telephone Number:

(307)-634-6017

This corner record was prepared by me or under my direction and supervision.  
**SEAL & SIGNATURE**



Corner Name: NE Corner Section: 19 T 15N R 63W; 6TH P.M. Cross-Index No.: N-5



- FOUND ORIGINAL CORNER
- SET CORNER
- RESET CORNER
- S.F.N.F. CORNER SEARCHED FOR AND NOT FOUND

**BASIS OF BEARINGS**  
 SOLAR OBSERVATION NEAR THE NORTHEAST CORNER OF SECTION 22 T. 15 N. R. 64 W.